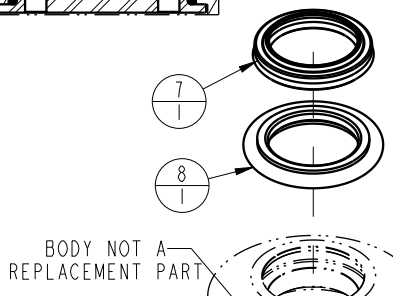
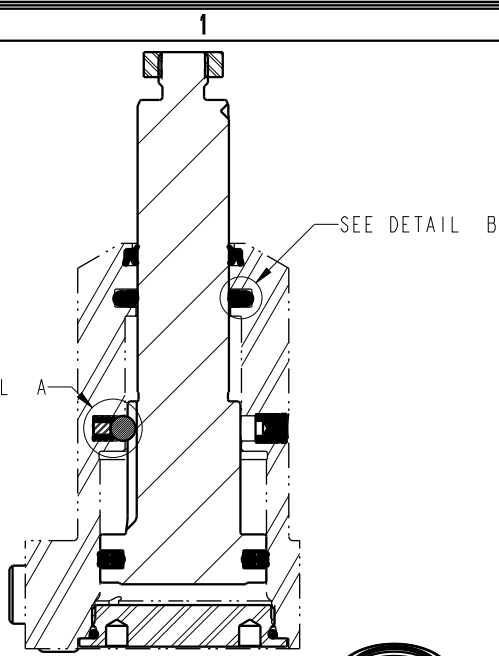
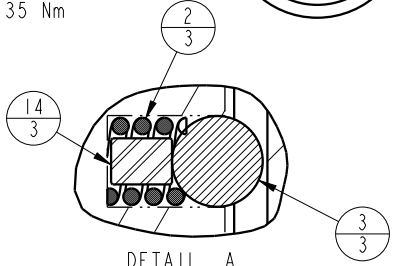
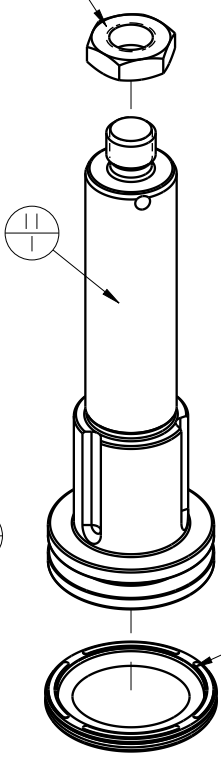


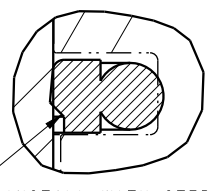
NO	QTY	PART NO	DESCRIPTION	SEAL KIT
1	1	21510002	NUT, JAM, HEX, M12-1.50	
2	3	23350086	SPRING, COMPRESSION	X
3	3	23650010	BALL, TUNGSTEN-CARBIDE, 6mm	X
4	4	39051079	O-RING, (6mm X 1)	X
5	1	39051083	O-RING, (41mm X 2)	X
6	2	39051087	O-RING, (4mm X 3)	X
7	1	39053043	SEAL, WIPER, SNAP IN, WED, 22, 94A, AU	X
8	1	39056003	SEAL, STEP, ROD, 22	X
9	1	39056023	SEAL, CAP, PISTON, 40, 90A, AU GRPHT FLD	X
10	2	43068004	PLUG, SOCH, G1/8	
11	1	81400123	PLUNGER, SC, 7MPa, 40B, STR	
12	1	81400153	CAP, LC/SC, 7MPa, 40B	
13	4	81400200	PLUG, MANIFOLD, 7MPa, M6	
14	3	81400203	PIN, STOP, BALL, METRIC, 6mm BALL	X
N/A	N/A	L6014400	KIT, SEAL, SC, 7MPa, 40B	NOTED



TORQUE TO 25.8 FT-LB/35 Nm



USE GREASE TO HOLD SPRING, STOP PIN, & BALL IN BODY PRIOR TO INSTALLING PLUNGER



TORQUE TO 10 FT-LB/13.6 Nm

TORQUE DRY JOINT TO 25 IN-LB/2.8 Nm

TORQUE DRY JOINT TO 30 FT-LB/40.7 Nm USING SPANNER TOOL AT150034

PARTS LIST	
	VEKTEK, INC. 1334 E. SIXTH AVE. P.O. BOX 625 EMPORIA, KS. 66801 U.S.A.
ASSEMBLIES AFFECTED L1414000S	PARTS LIST, ASSY, SC, BF, 7MPa, 40B, STR
DATE: 9-15-16	SIZE A LPL1456 REV B

B	3273	RELEASE	JDW	08/15/18
REV	IN ACCORDANCE WITH ECN	EFFECTIVE DATE	REVISED BY	DATE
DRW BY:	TWA	DRAWING STATUS: ***		
DATE:	9-15-16	PRODUCTION APPROVED FOR RELEASED STATUS ONLY		